

# SEMINOLE LANDING

# 36

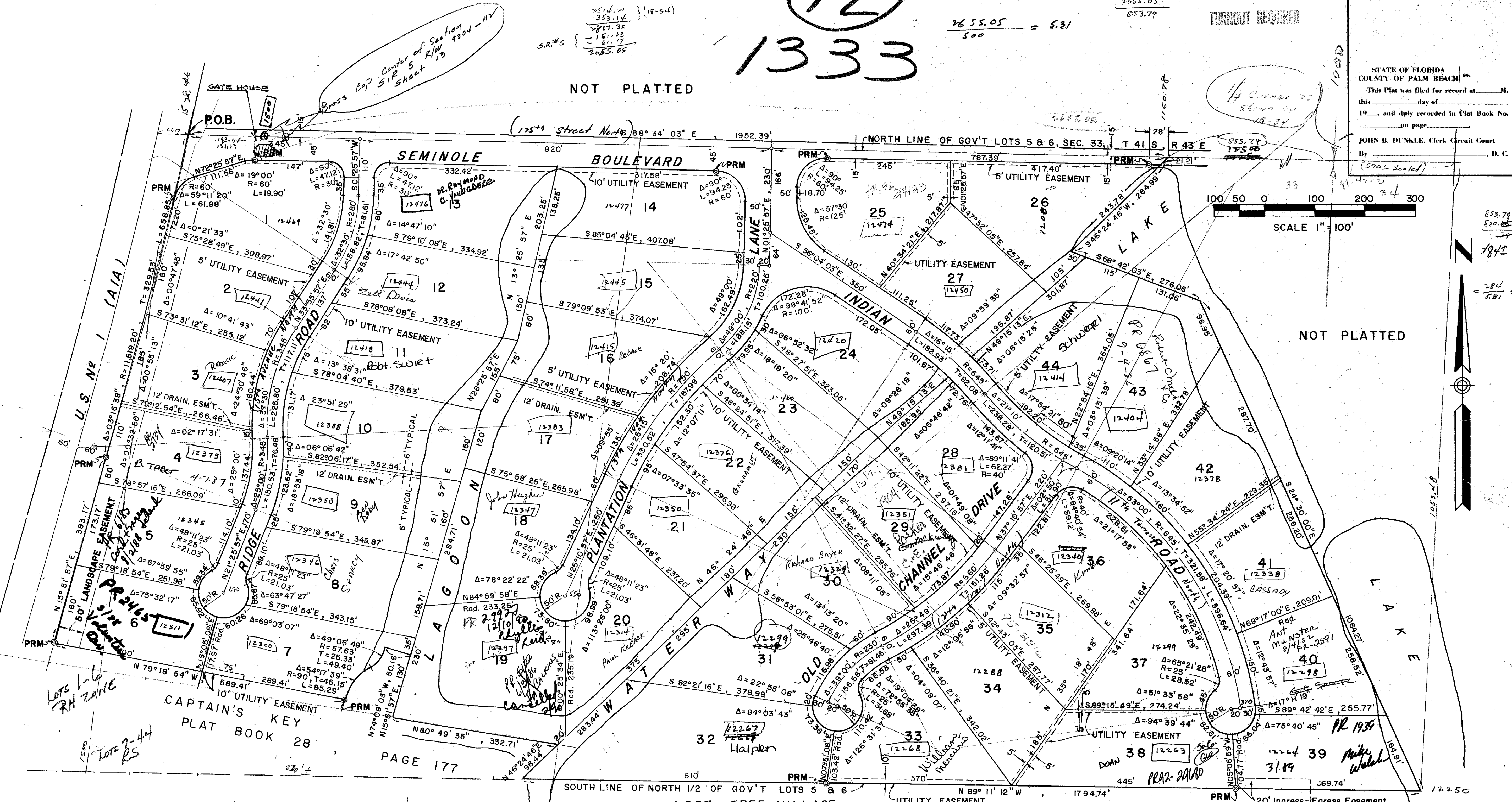
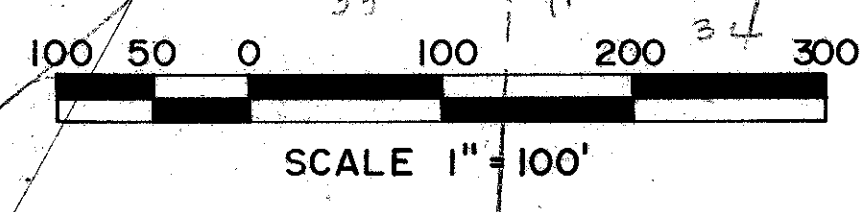
# 12

# 1333

$\frac{251.71}{363.14} (18-54)$   
 $\frac{265.05}{500} = 5.31$   
 $\frac{265.05}{500} = 5.31$

-195.39  
 151.13  
 265.05  
 853.79  
 TURNOUT REQUIRED

STATE OF FLORIDA  
 COUNTY OF PALM BEACH  
 This Plat was filed for record at \_\_\_\_\_ M.  
 this \_\_\_\_\_ day of \_\_\_\_\_  
 19\_\_\_\_ and duly recorded in Plat Book No. \_\_\_\_\_  
 on page \_\_\_\_\_  
 JOHN B. DUNKLE, Clerk Circuit Court  
 By \_\_\_\_\_ D. C.



CAPTAIN'S KEY  
 PLAT BOOK 28  
 PAGE 177

OLD PORT VILLAGE  
 PLAT NO. 2  
 PLAT BOOK 28, PAGES 113-117

BROCKWAY, OWEN & ANDERSON ENGINEERS, INCORPORATED WEST PALM BEACH, FLORIDA		
SEMINOLE LANDING		
IN 2 SHEETS		
FIELD: GIDDENS	SCALE: 1" = 100'	Job No. 72145
OFFICE: GIVENS	DATE: NOV 1972	Dwg. No. BF 2107
DR. BY: GIVENS		
FIELD BK V-17-PAGE 60		

# 1000-190

# 30/36